

KRANZBERG ARTS
FOUNDATION

THANK YOU FOR CHOOSING THE BIG TOP TO HOST YOUR EVENT

St. Louis' most unique venue is accepting bookings for the 2022 season. Built in Italy by two of the premier tent building firms in the world, The Big Top has been a staple in Grand Center for years. Under the Kranzberg Arts Foundation, The Big Top has found a permanent home allowing significant improvements to the venue's production and guest experience. The tent now features world-class concerts, theatre, dance productions, galas/festivals, and private events.

OUR MISSION

The Kranzberg Arts Foundation is a community-driven organization dedicated to providing local, emerging artists and community arts organizations the resources and infrastructure necessary for the arts to thrive in St. Louis—because we believe artists and the cultural communities they build represent the heart and soul of our city.

WHO WE ARE

The Kranzberg Arts Foundation has a vision for the city of St. Louis.

We believe our artists, communities, and cultural experiences represent the heart and soul of our city—and we are committed to providing the opportunities and resources necessary for the arts to thrive, now and in the future.



THE GRANDEL
3610 GRANDEL SQUARE

THE DARK ROOM
3610 GRANDEL SQUARE

3333
3333 WASHINGTON AVE.

THE MARCELLE
3310 SAMUEL SHEPARD DR.

HANSEN HOUSE
3617 GRANDEL SQUARE

3701 GRANDEL SQUARE
3701 GRANDEL SQUARE

THE KRANZBERG
501 N GRAND BLVD.

THE BIG TOP
3401 WASHINGTON AVE.

SOPHIE'S ARTIST LOUNGE
3333 WASHINGTON AVE.

HIGH LOW
3301 WASHINGTON AVE.

BUILDING FUTURES
2720 N 13TH ST

3318 WASHINGTON
3318 WASHINGTON AVE.

3204 SAMUEL SHEPPARD DR.
3204 SAMUEL SHEPPARD DR.

.ZACK
3224 LOCUST ST.

SALLY'S ROOFTOP
3224 LOCUST ST.

THE WALLS OFF WASHINGTON
3401 WASHINGTON AVE.

CENTRAL STAGE
501 N GRAND BLVD.

UNIQUE CONFIGURATIONS FOR: CORPORATE EVENTS



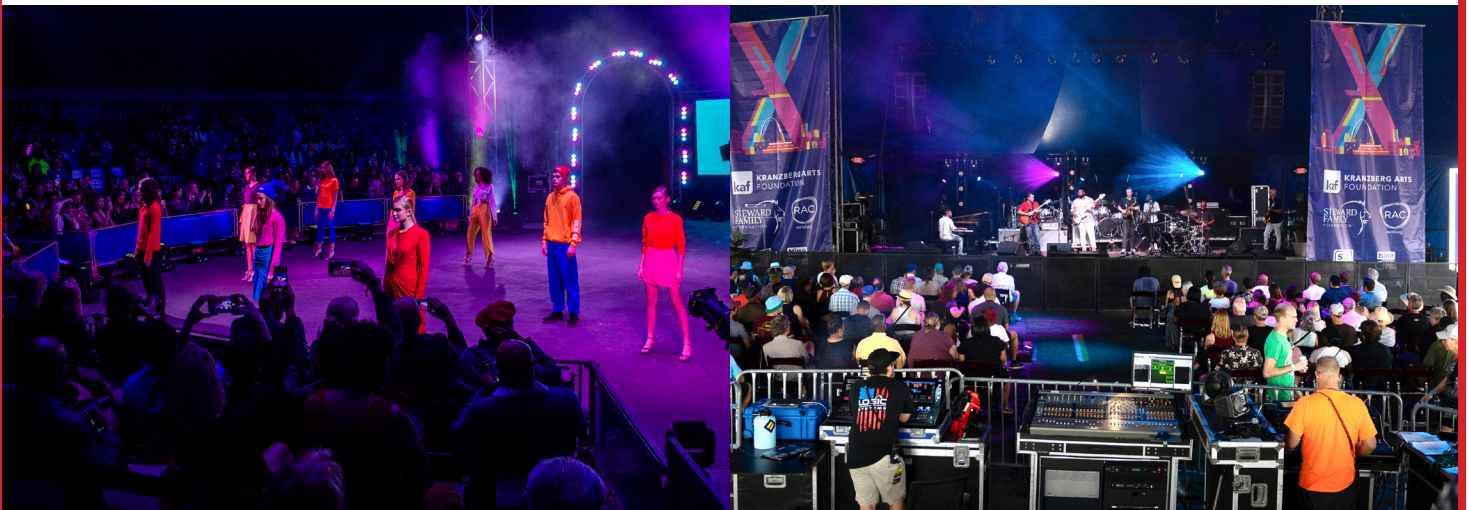
NON-PROFIT GALAS

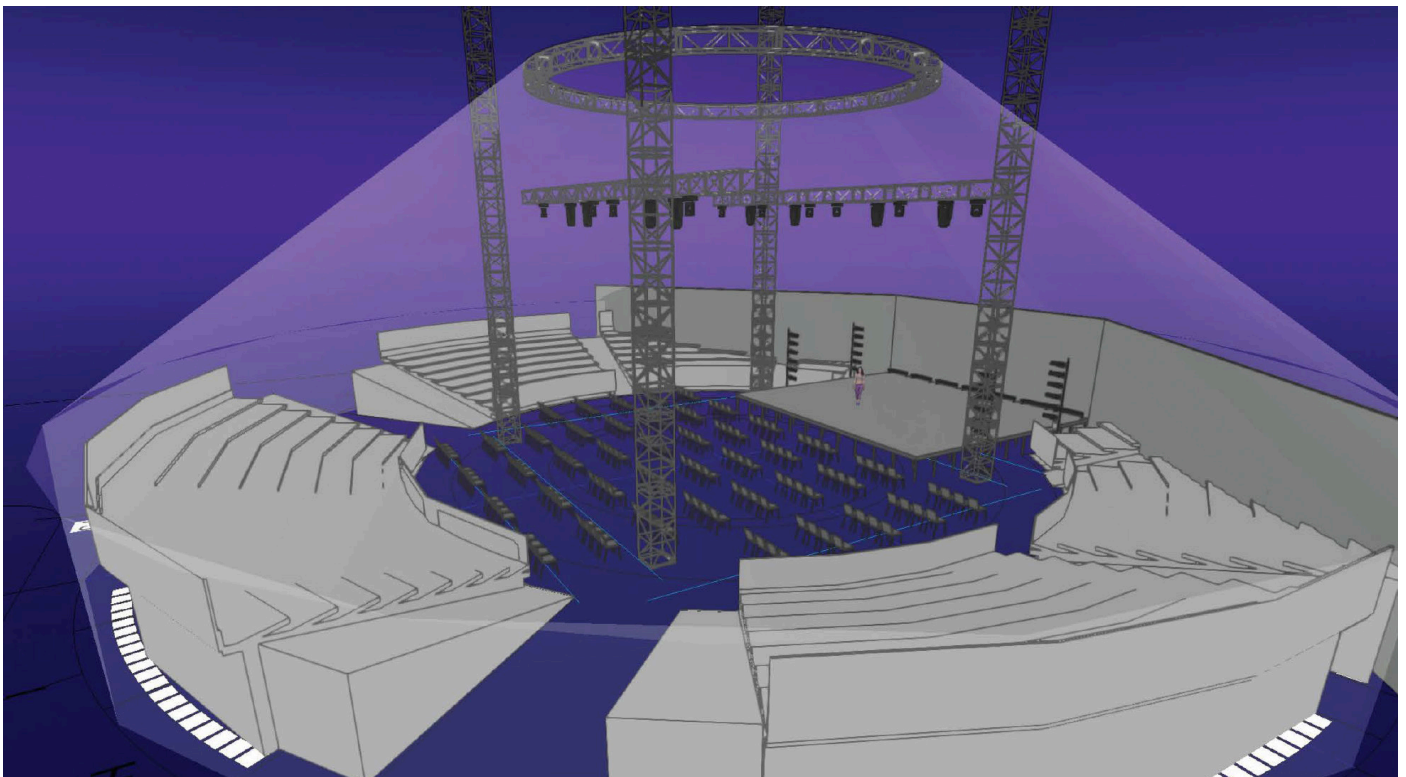
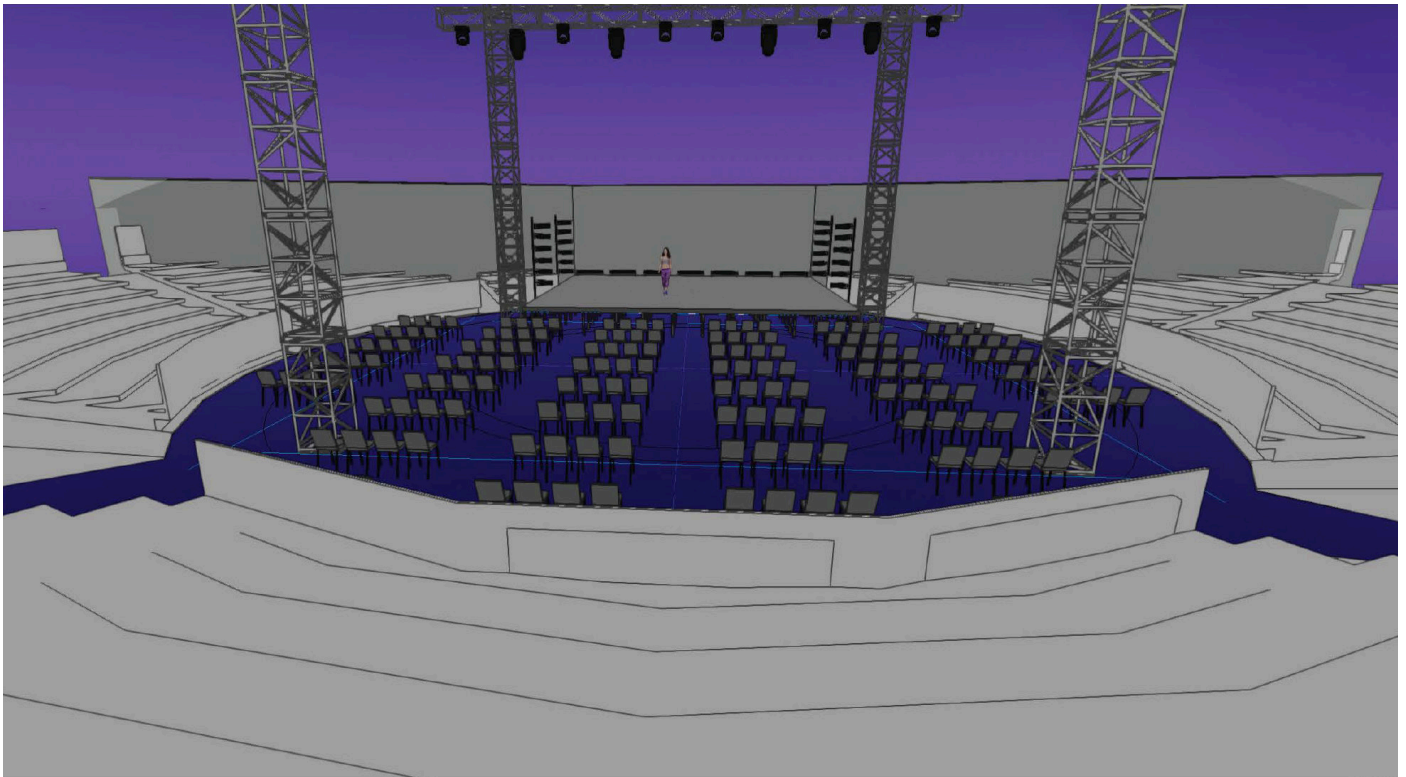


ART EVENTS



CONCERTS



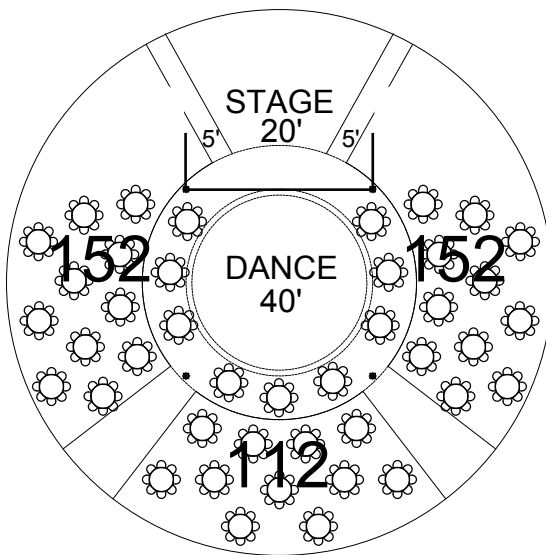


ABOUT THE TENT

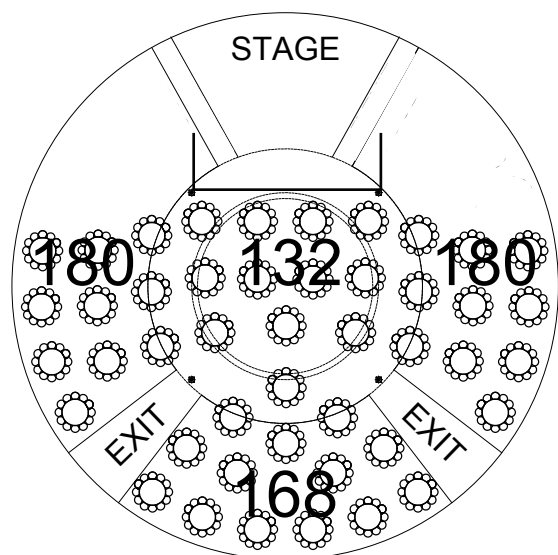
In American circus lingo, the tent is known as the “Big Top” or in Germany the Zelt, in France the Chapiteau, and in Mexico as la carpa...

- The tent is 38 meters (125') in diameter.
- It is supported by 4 king poles that are 17 meters (56') high and held in place by 22 tirlors (hand winches).
- The circular cupola that the tent roof attaches to is 13 meters (42.64') in diameter and the bottom of the cupola framework is 13 meters (42.64') above the ring floor.
- The perimeter is supported by 100 side poles that are 4 meters (13.12') high
- The perimeter is supported by 100 side poles that are 4 meters (13.12') high
- The tent requires approximately 170 steel stakes that are 2" in diameter and 5' long, they are driven into the ground by a hydraulic hammer attached to a skid steer loader
- The tent requires 20 laborers to raise, along with the tentmaster and assistant tentmaster
- The area required to build-up the tent is 170' x 170', this includes room for the stakeline and king pole guyline anchor plates
- In tent terminology our big top is known as a tension structure
- Our big top was built in Italy by two of the premier tent building firms in the world. One firm built the fabric sections, and the other firm built the steel structure.





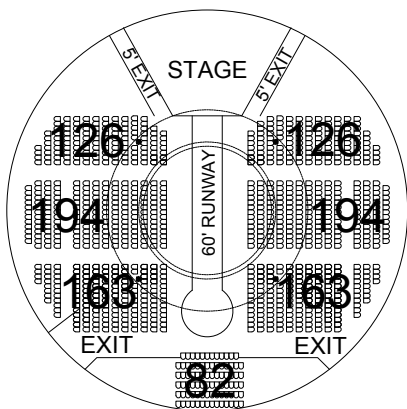
416 CAPACITY
2-1-18



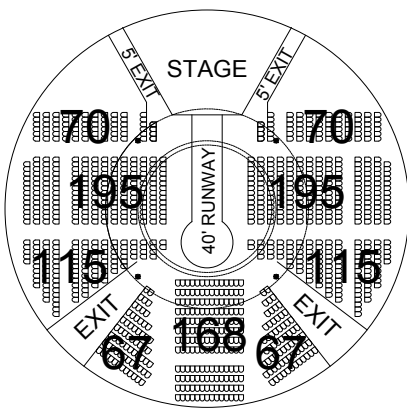
660 CAPACITY
2-2-18



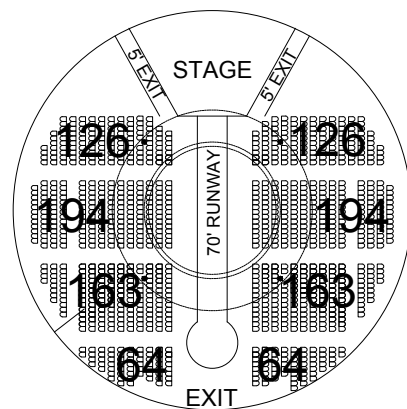
CONCERT AND RUNWAY FLOORPLANS



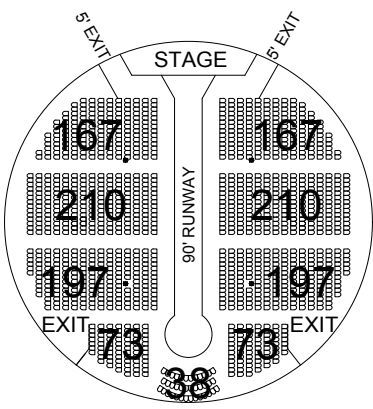
FASHION SHOW SET-UP
1,048 CAPACITY



FASHION SHOW SET-UP
1,062 CAPACITY



FASHION SHOW SET-UP
1,094 CAPACITY



FASHION SHOW SET-UP
1,332 CAPACITY

RATES FOR THE BIG TOP

RATE
\$8,500

INCLUDES STAGE AND SOUTHSIDE STADIUM SEATING

NON-PROFITS

Discounts are available for non-profit organizations. Please provide a 501c3 letter of tax exemption. For more information, please contact Director of Special Events, Becky Hale.

CAPACITY & SQUARE FOOTAGE

SEATED	COCKTAIL RECEPTION	SQUARE FOOTAGE
600	1,600	12,200 Sq Ft

Concert seating available - inquire about pricing

INCLUDES:

- 1 Security Guard
- WIFI
- Standard indoor Restrooms
- Electricity - 800 amp service
- VIP Tent- seated 130, cocktail reception 200
- Concession Tent- available for caterers
- Water hookups
- Stage/Lighting/Sound System
- Truss system with rigging points
- Stage
- Green Room
- Production Office
- Front Of The House Manager

ADDITIONAL SERVICES

- Coatroom Attendants available (\$110 per attendant)
- Valet Parking available upon request for an additional fee
- Polls on the north side of the tent can be moved and open to 16 feet for lead ins
All polls can be moved to accommodate any event. Please inquire for pricing
- Parking Available
- Heating and AC units available upon request for an additional fee

PREFERRED VENDORS



Aries Rental Company
314-664-6610
ariesco.com



Logic Systems
314-968-4050
logicsound.com



Millennium Productions
314-918-9335
millenniumproductions.com

DÉCORUM

Decorum
314-447-4000
decorumeventsstl.com



Klance Unlimited
636-271-3400
flanceunlimited.com



MetroTix
314-534-1111
metrotix.com

PREFERRED CATERERS



Ces and Judy's Catering
(314) 991-6700
info@cesandjudys.com



Butler's Pantry
(314) 664-7680
coleen@butlerspantry.com



Pablo's Catering Service
(314) 332-9815
pabloscatering.com



Michelle C Catering
(314) 443-6956
michelec1028@gmail.com

PAST CLIENTS



BOYS & GIRLS CLUBS
OF GREATER ST. LOUIS



100% OF THE PROCEEDS GO TO SUPPORT THE ARTS IN ST. LOUIS*

